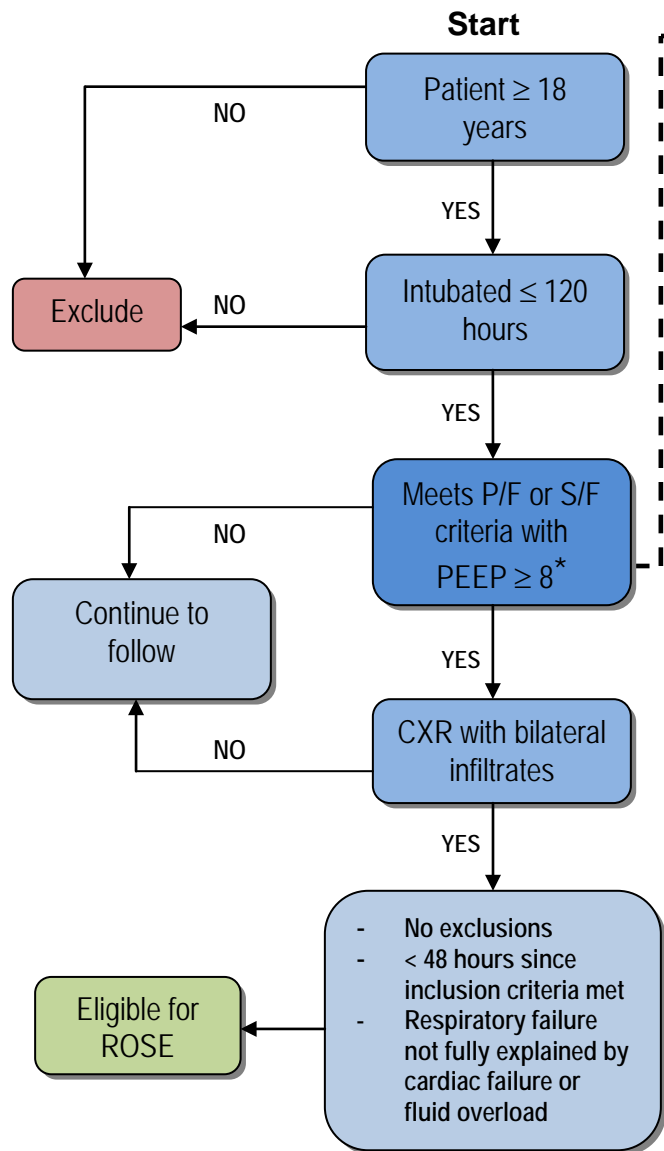
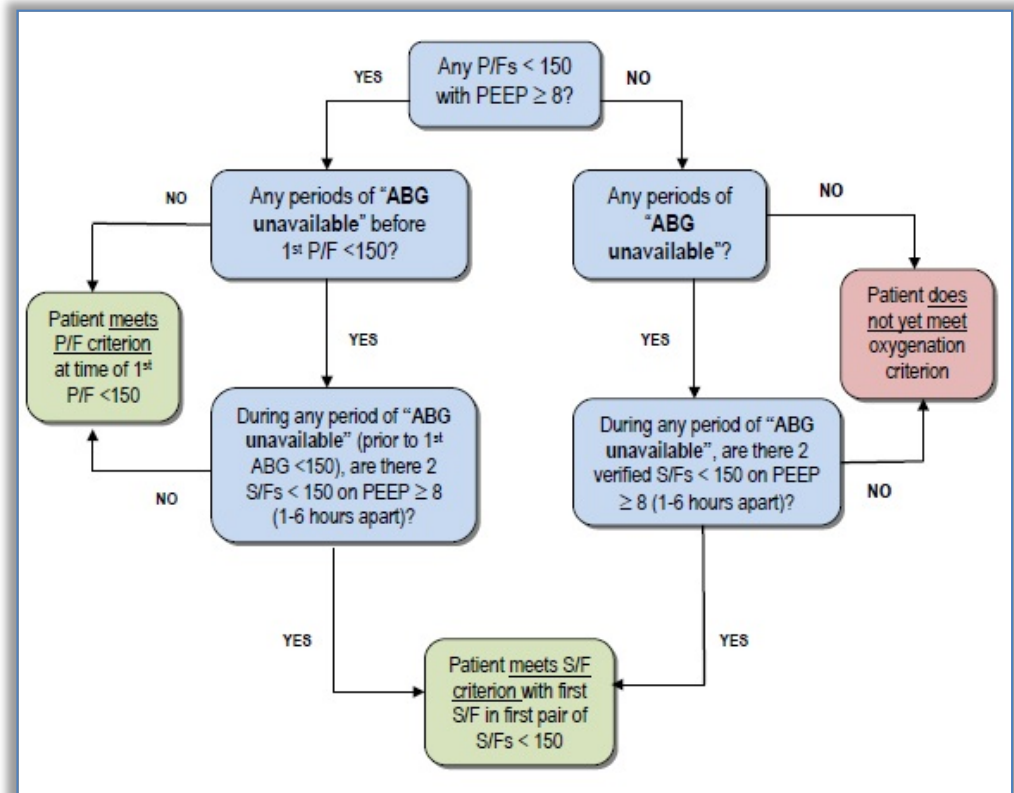


Screening for ROSE



*Meeting P/F or S/F Criteria



ABG unavailable: Defined as no ABG value for 6 or more hours; i.e., during an “ABG-free period” of ≥ 6 hours

Qualifying P/F or S/F criteria: The first P/F <150 on ≥ 8 cm H₂O of PEEP OR the first pair of equivalent S/Fs (see Appendix A) on ≥8 cm PEEP when ABGs are unavailable (provided other inclusion criteria present).